



## Welcome to our latest Project update

In this edition:

- In the community
- Project timeline
- Project update

## In the community

### Mudgee Small Farm Field Days 2025

We were pleased to connect with so many of you at the 2025 Mudgee Small Farm Field Days. This year was our fourth consecutive attendance at the event. Across the two days, we had meaningful conversations with more than 160 visitors about the Project, particularly around the Environmental Impact Statement (EIS) process and the timeline we are working towards. There was also strong interest in how turbines work and grid connections.

As many of you heard at our stall, we are currently running a short survey to gather ideas on how community benefit funding could best be allocated to support the local area. Thanks to those who have already completed the survey. Your feedback highlights the importance of supporting community-based organisations and investing in road and infrastructure upgrades.

If you haven't yet completed the survey, we would really value your feedback. Simply scan the QR code to access the survey.

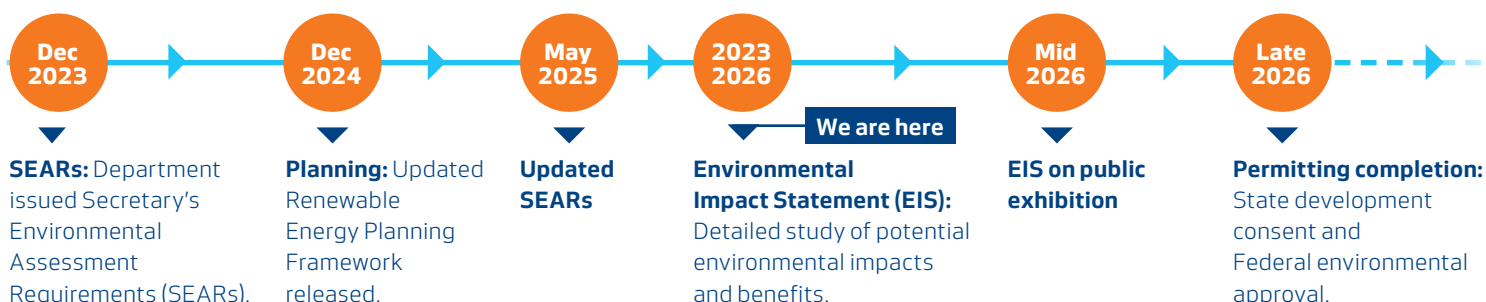


Mudgee Small Farm Field Days 2025

## Project timeline

The overall development timeline has been revised to align with the NSW Government's updated Renewable Energy Planning Framework requirements, introduced in December 2024. The Framework includes updated guidelines for large-scale wind projects such as Piambong Wind Farm. To ensure full compliance,

we have incorporated the Framework changes into our Project planning. This work has required additional studies and design adjustments. These changes have contributed to some delays, and we are now working towards submitting the EIS in mid-2026.





## Project update

The Piambong Wind Farm team has been conducting detailed environmental studies as part of the EIS, in accordance with the updated Secretary's Environmental Assessment Requirements (SEARs) for the Project. These studies have spanned several technical areas, including biodiversity, heritage, noise and visual assessments.



### Noise

The NSW Wind Farm Noise Guidelines specify some of the most stringent noise criteria in the world. The allowable level is somewhere between a whisper and a quiet library. This level is set to ensure that noise from wind turbines is compatible with surrounding land uses.

Assessments conducted to date have involved background noise monitoring and technical modelling to predict the expected levels of noise and vibration from the wind farm. The results predict that the operational noise at all non-involved neighbouring dwellings will be lower than the limits specified in the Guidelines.



### Biodiversity

The Piambong Wind Farm project must satisfy the stringent biodiversity impact assessment requirements of both the NSW Government (via the Environmental Impact Statement) and the Australian Government (through the EPBC process). These requirements include conducting surveys and technical assessments for the proposed wind farm over many years.

Vegetation clearing and residual impacts to flora and fauna species will be avoided and minimised where possible or offset through the NSW Biodiversity Offset Scheme. In addition, we will develop a Bird and Bat Adaptive Management Plan before construction to define measures for reducing potential impact to avifauna during Project construction and operation.



### Visual impact

In recent months, our team has visited the area to capture photographs from key locations around the proposed wind farm site. These images are used to help assess potential visual effects. We will return to the region in October and November to capture any additional viewpoints that may have been missed or where further assessment is needed. This ensures we provide a thorough and accurate picture of the potential visual experience for the community.



### Cultural heritage

To date, we have completed two separate surveys with the assistance of Registered Aboriginal Parties, including the Wellington and Mudgee Local Aboriginal Land Councils. A further survey is planned for November. All site recordings to date are primarily low-density artefact scatters and isolated artefacts, the majority of which will remain undisturbed, with any disturbance limited in scope.



### Project design

We are working on the final locations of the turbines. The layout of the wind farm is being refined based on the results of the ongoing studies for the EIS. These studies require time, and as we learn more, we adjust the design, including turbine locations, in accordance with the Department of Planning, Housing and Infrastructure (DPHI) requirements. Once the layout is complete, we will make it publicly available before we lodge the EIS.